

RESTORING A SQL DATABASE

for Relate Software

relate
software

relate
software

www.relate-software.com

support@relate-software.com

ROI +353 1 459 7800

UK +44 871 284 3446

SUPPORT SERVICES

Relate Software is committed to strong customer service and satisfaction. At all times you will be able to make contact with our company and our technical service teams. Relate Software will provide the highest level of customer service and will provide telephone support as well as online remote access support and where applicable we will call out onsite to help resolve any support issue.

You can make contact with our support department in the following ways:

Telephone:

Ireland: +353 (0)1 4597800

United Kingdom: +44 (0)871 284 3446

Email: support@relate-software.com

Opening Times for Support 09:00-13:00, 14:00-17.30

COPYRIGHT

This document is protected under copyright law and may not be reproduced in any format whatsoever without the prior written consent of Relate Software Development Limited. Failure to comply with this condition may result in prosecution. The program and documentation are protected under copyright law and the program is licensed for use by the user who has completed the Software Registration agreement. The program is licensed under the conditions referred to in the Software License Agreement.

Relate Software does not warrant that the software package will function properly in every hardware/software environment. The software may encounter problems working in combination with modified versions of the operating system, with certain print-spooling or file facility programs, or with certain printers supplied by independent manufacturers.

Rigorous testing of the software is carried out by Relate Software and all documentation and help files are reviewed, however Relate Software makes no warranty or representation, either express or implied, with respect to this software or documentation, their quality, performance, merchantability, or fitness for a particular purpose.

The software and documentation are licensed 'as is', and the licensee, by making use of the system, assumes the entire risk as to their quality and performance.

Relate Software will not be liable for direct, indirect, special, incidental, or consequential damages arising out of the use or inability to use the software or documentation, even if advised of the possibility of such damages. In particular, and without prejudice to the generality of the foregoing, Relate Software will not incur any liability for any programs or data stored. Relate Software will not incur any costs of recovering such programs or lost data for whatever reason.

We reserve the right to alter, modify, correct and upgrade our software and documentation without notice.

In no event shall Relate Software be liable for any special, indirect, or consequential damages whatsoever resulting from loss of use, data or profits, whether in action of contract, negligence or other action arising out of or in connection with the use or performance of the supplied accounts templates, software, documentation or information available on its websites.

© Relate Software

Contents

Support Services	2
Restoring your SQL Database	5
Overview	5
How to Restore the SQL Database	5
Connecting the Products to the Database	12

RESTORING YOUR SQL DATABASE

OVERVIEW

In order to restore a database backup, you must first have a valid backup. If you are unsure of how to take a backup of the database please see our 'Backing up a SQL Database' guide for assistance.

A SQL database is composed of two files, a .mdf and a .ldf. These file must be available on a drive which is physically loaded onto the server/local pc where SQL is installed.

HOW TO RESTORE THE SQL DATABASE

Launch SQL Server Management Studio from the Start Menu, All Programs, Microsoft SQL Server (2008 R2/2015 depending on the version being used). The 'Connect to Server' window will open. Figure 1 Click 'Connect' to connect to the instance.

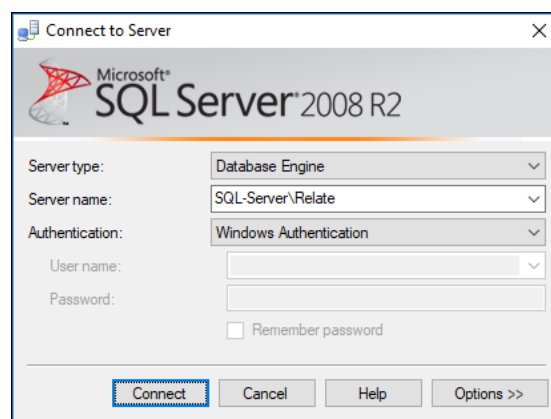


Figure 1

If the server name is not displayed select the drop down arrow and choose <Browse for more...>. Figure 2

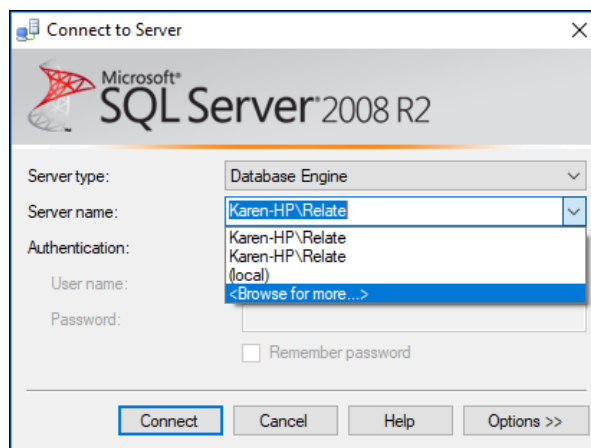


Figure 2

Choose the 'Network Servers' tab, for local databases you should use Local Servers. The databases will load and a 'Database Engine' option will become available. Expand the 'Database Engine' using the + sign. Choose your server name from the list provided and select OK. Figure 3

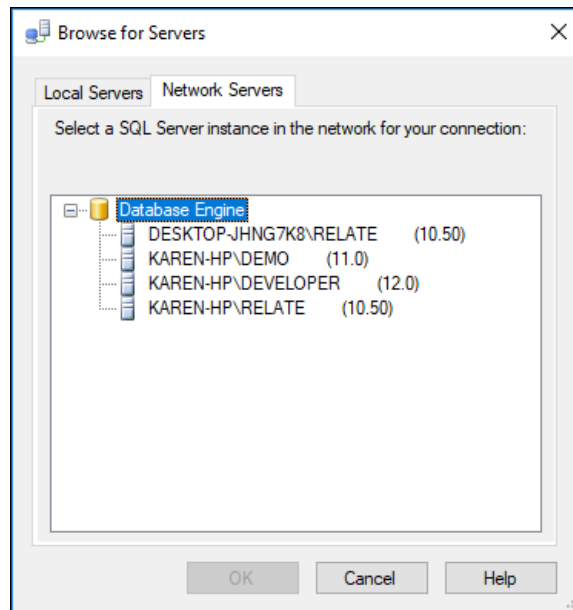


Figure 3

Select 'Connect'. Figure 4

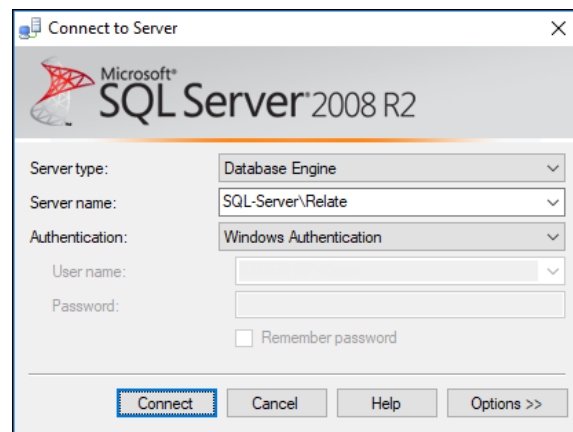


Figure 4

After connecting to the appropriate instance of the Microsoft SQL Server Database Engine, in Object Explorer, you will see an expanded server tree. Figure 5

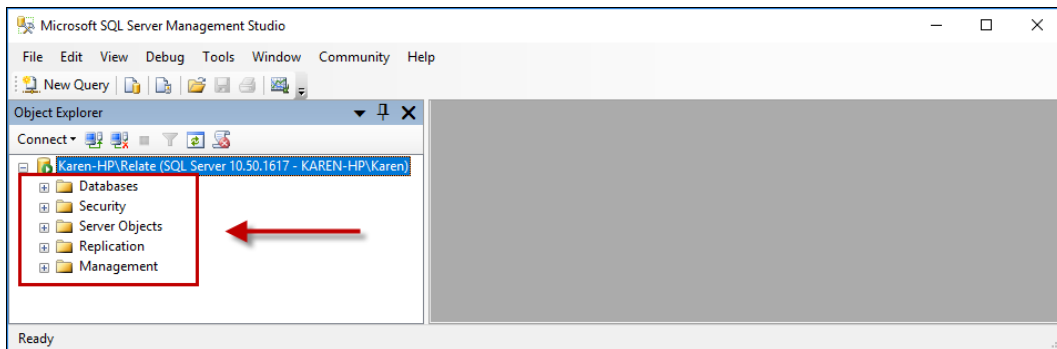


Figure 5

Right click on 'Databases' and select 'Restore Database...'. Figure 6

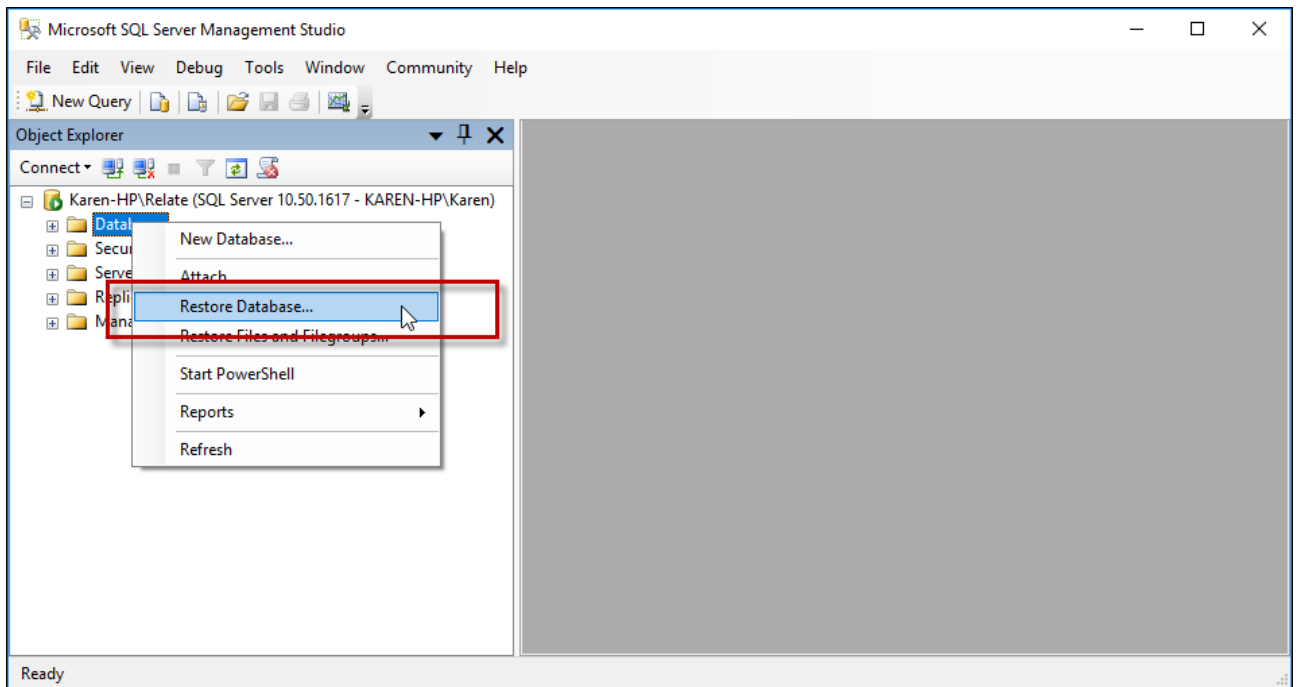


Figure 6

At the 'To database:' type in the name you are restoring the database as, this is normally DRIVE_[PRACTICEINITIALS], for example DRIVE_RS. Select 'From device:' and select the elipses (box with 3 dots). Figure 7

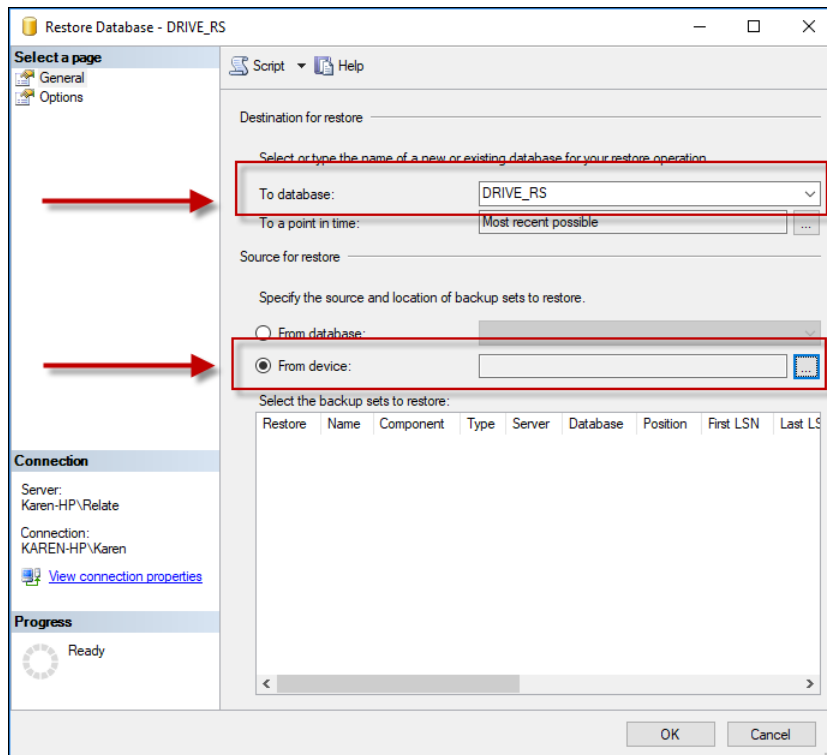


Figure 7

From here select the 'Add' option. Figure 8

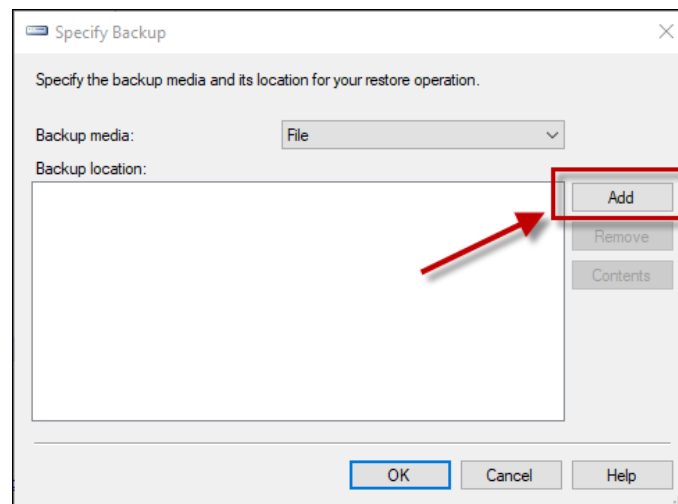


Figure 8

Browse to the location of the database backup file. The system is searching for a .bak file, you may need to choose the 'Files of type:' dropdown to all to locate the .bak file. Once located highlight it and select OK. Figure 9

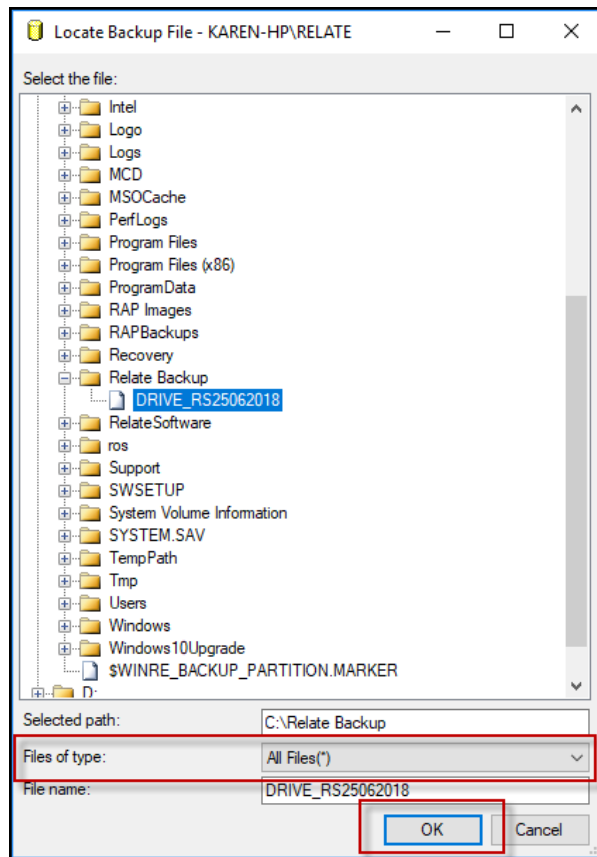


Figure 9

Select OK again. Figure 10

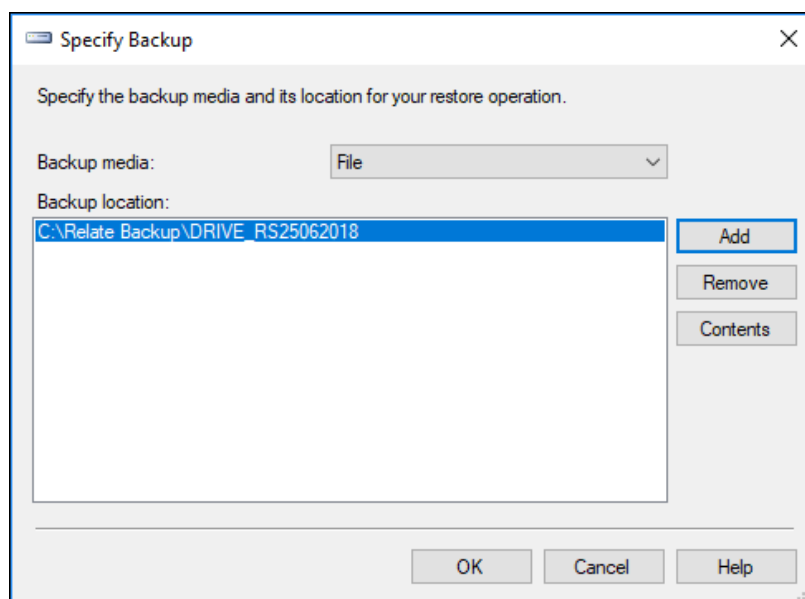


Figure 10

On the 'Restore a Database' screen tick the box 'Restore' beside the newly populated database details and then choose 'Options' from the top left corner. Figure 11

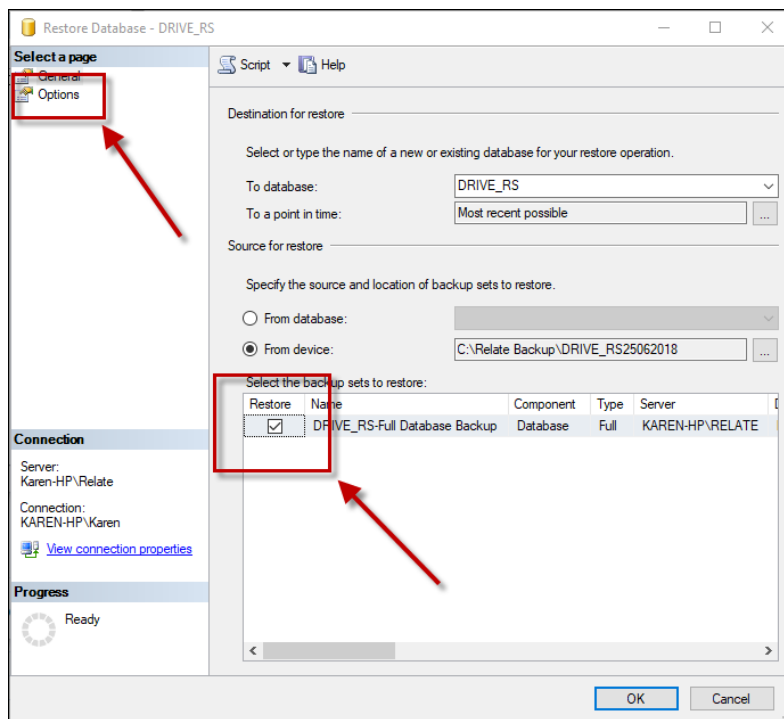


Figure 11

From the 'Options' screen you can choose the location where the mdf and ldf are going to be created and stored. If you want to change this location use the ellipses to browse to the new location. Otherwise select OK. Figure 12

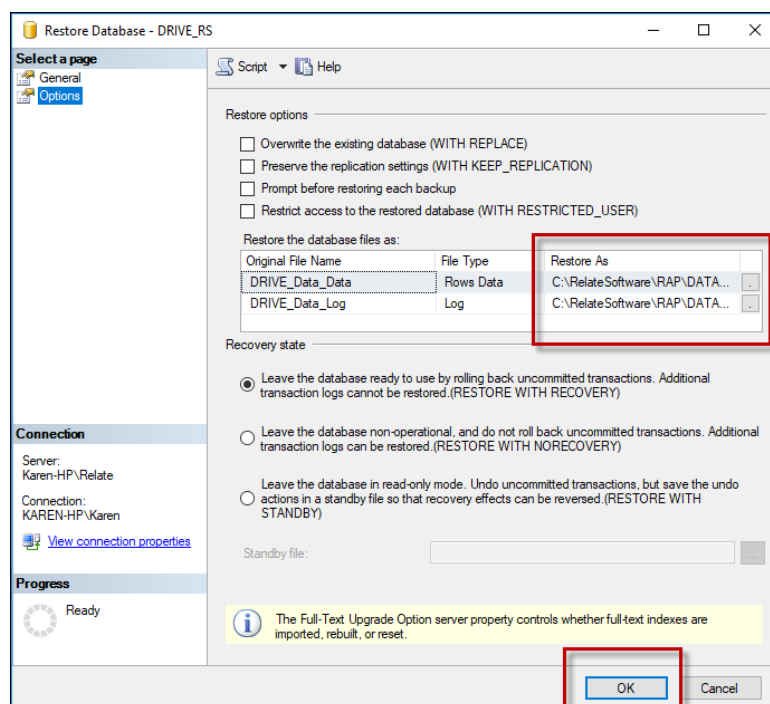


Figure 12

The progress wheel will show how much of the database has been restored. When this reaches 100% the database has been restored. Figure 13

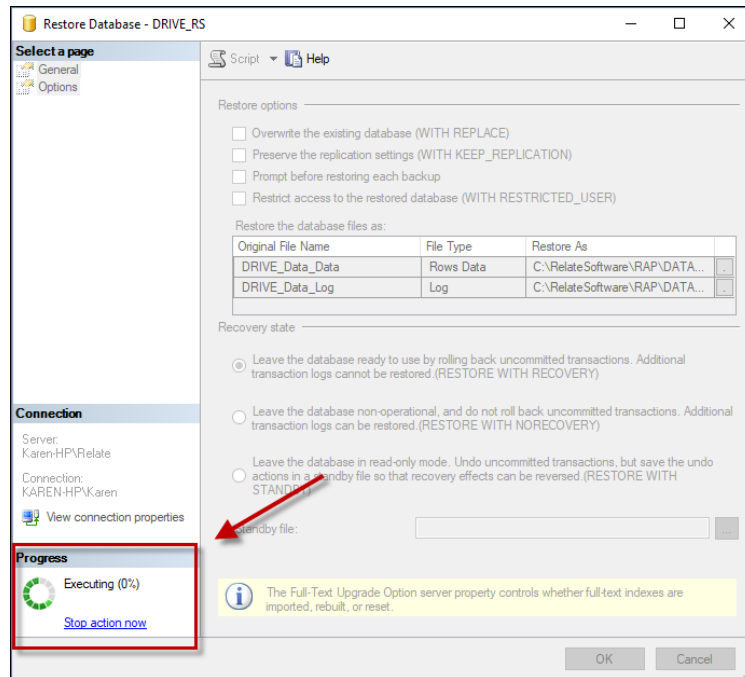


Figure 13

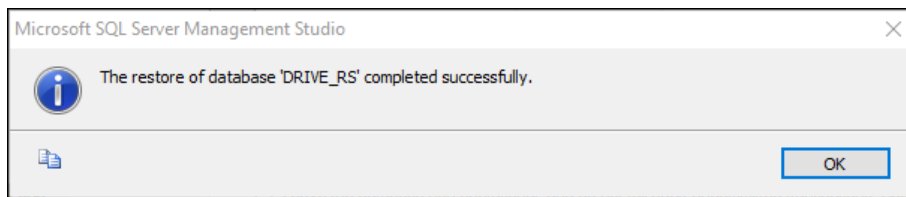


Figure 14

The database is now visible from Object Explorer. Figure 15

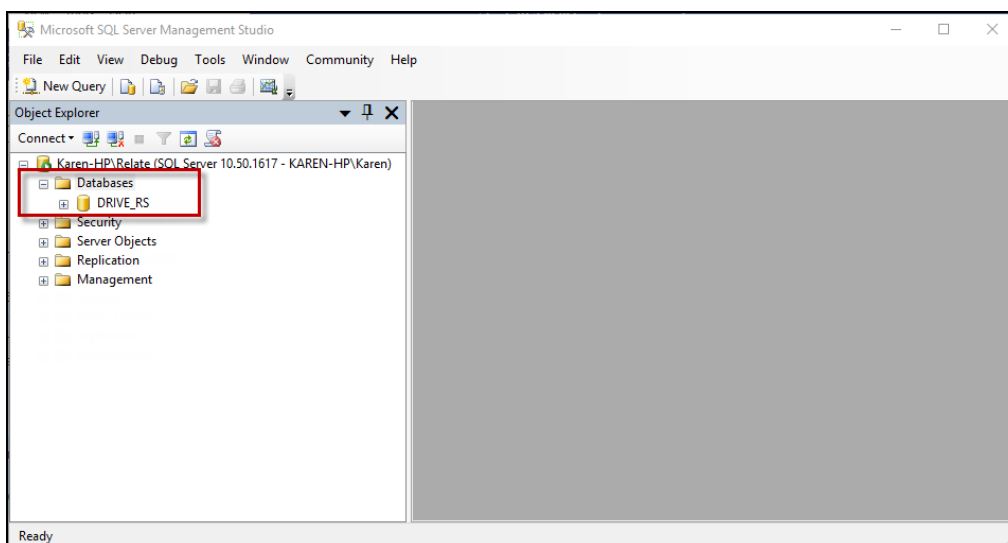


Figure 15

CONNECTING THE PRODUCTS TO THE DATABASE

When the database has been restored double click on any of the product icons, in this example Relate Accounts Production has been launched and is requesting a connection to be set up to the database.

You will need to enter the server details, this information can be found by launching Microsoft SQL Server Management Studio from the Start menu, All Programs, Microsoft SQL Server 2008 R2. The server name will be listed on the first screen. Figure 16

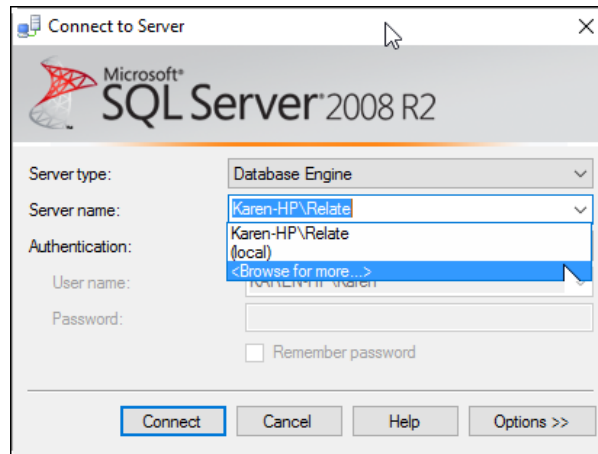


Figure 16

Enter these details to the RAP connection screen, then select the box with 3 dots from the 'Select Database' line to populate your database. From the drop down choose the database which has just been restored. Authentication should be Windows Authentication and Network Protocol should be Named Pipes. Figure 17

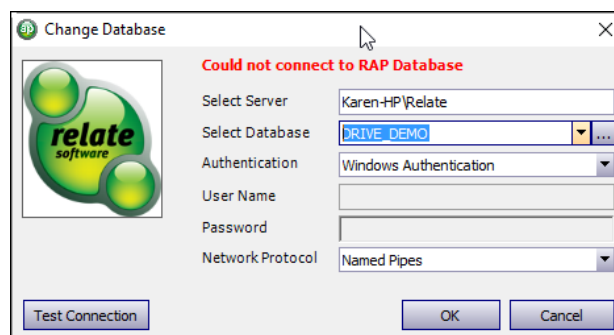


Figure 17

Select OK. You may be prompted to update the software. Please check our website www.relate-software.com, for all of the latest updates.

If you encounter any issues during the installation please contact the Relate Software Support team.